



Temple Emanu-El

Haverhill, MA

### Shabbat and Service Schedule

May 2024

Please check the [website](#) and Shavuon for the most current information.

#### Friday, May 1

Candle Lighting 7:29 pm  
Yom HaSho'ah Service 7:00 pm

#### Saturday, May 4

*Parashat Acharei Mot*  
Shabbat Morning Service 9:30 am  
with Elisheva Pripas using *Mishkan T'filah*  
Israel Chavurah noon

#### Friday, May 10

Candle Lighting 7:37 pm

#### Saturday, May 11

*Parashat K'doshim*  
Shabbat Morning Service 9:30 am  
with Rabbi Ashira using *Sim Shalom*  
Weekly Parasha Study 1:00 pm

#### Friday, May 17

Candle Lighting 7:44 pm  
Graduation Shabbat Service 7:00 pm

#### Saturday, May 18

*Parashat Emor*  
Shabbat Morning Service 9:30 am  
with Rabbi Ashira using *Mishkan T'filah*  
Weekly Parasha Study 1:00 pm

#### Friday, May 24

Candle Lighting 7:51 pm

#### Saturday, May 25

*Parashat B'har*  
Shabbat Morning Service 9:30 am  
with Rabbi Ashira using *Sim Shalom*  
Weekly Parasha Study 1:00 pm

#### Friday, May 31

Candle Lighting 7:57 pm



Dear chevre,

With Purim and Pesach behind us, we have entered the wilderness. Sefirat haOmer, beginning on the second night of Pesach, is the forty-nine day period between Pesach and Shavuot when we count each day. In ancient times, this period was the beginning of the barley harvest. Jews would bring the first sheaves of barley to the holy Temple in

Jerusalem to give thanks to God for the harvest. The word "omer" means sheaf. This practice originates in the book of Leviticus which instructs us:

You will count from the day after Shabbat, from the day when you bring the sheaf (omer) of the elevation offering, seven weeks. They must be complete. Until the day after Shabbat in the seventh week you will count fifty days. Then you will bring an offering of new grain to God.

Over time, the festival of Shavuot also became associated with the giving of Torah at Mount Sinai. As a result of this connection, the time period of the omer came to represent the journey from Egypt through the wilderness to Mount Sinai. It is easy to imagine the wilderness as some kind of vast empty desert. However, our tradition teaches that we actually received many gifts in the wilderness. One midrash (creative rabbinic interpretation) asserts that all the fine gifts that God gave to Israel were from the wilderness—the Torah, the Mishkan (Tabernacle), the Sanhedrin (ancient high court), the priesthood, prophecy, and more. Instead of a desolate wasteland, the wilderness was where our ancestors gained the knowledge and skills to become a new nation and to create a sacred society to live in the Promised Land.

---

*As our Israelite ancestors traveled through the wilderness, they underwent a spiritual and emotional transformation.*

---

They entered the wilderness with a slave mentality and gradually shifted to a more liberated perspective. When we count the days of the omer, we reenact this communal shift and have the opportunity to engage in our own spiritual reflection and growth. If this idea of counting the omer is new to you or something you've not done previously, I invite you to try marking the days between Pesach and Shavuot this year as a way to tune in more closely to Jewish time, to give yourself the opportunity to really notice what each day brings, and to appreciate the gifts you receive during this time in a metaphorical wilderness.

Counting the omer requires very little actual time and can be done individually or with others.

*Rabbi's Message continues on next page*

## RABBI'S MESSAGE

*Rabbi's Message continued from previous page*

Traditionally, the new day is counted after sunset and begins with the following blessing:

ברוך אתה אלהינו מלך העולם אשר קדשנו וצונו על ספירת העמר

Baruch atah Adonai, Eloheinu Melekh HaOlam, asher kid'shanu b'mitzvotav, v'tzivanu al sefirat ha-omer.

Blessed are You, Adonai our God, Sovereign of the Universe, who sanctifies us through sacred obligations (mitzvot) and commands us concerning the counting of the omer.

After reciting the blessing, one announces the appropriate day of the count. For example:

היום שמגה ימים שהם שבוע אחד ויום אחד לעמר

Ha-yom sh'monah yamim sheh-heim shavu'a echad v'yom echad la-omer.

Today is eight days, which is one week and one day of the Omer.

In addition to the actual counting of the day, consider adding a mindfulness practice or learning something new. I have tried different approaches to this period each year—journaling, practicing Zentangle art, meditating, studying Torah, or reflecting on specific areas of personal growth. There are many omer counting tools and guides available on the internet. To offer one resource as a starting point, check out the many omer rituals, readings, and reflections at RitualWell (<https://ritualwell.org/topic/counting-omer/>). If you have a meaningful or interesting experience counting the omer this year, let me know! I love to hear about people's spiritual journeys and relationships to Jewish traditions.

As we count and make our way through the wilderness to Shavuot and Mount Sinai, I want to mention two special events coming up this month. First, we will commemorate Yom HaSho'ah, Holocaust Remembrance Day, on Friday May 3 at 7:00 pm in our sanctuary. Sally Kaitz, the daughter of Holocaust survivors, will share her parents' experiences and how they impacted her family. We also will be joined by members of the Greater Haverhill Clergy Association, and our Makheila will offer beautiful and thoughtful music to honor the memories of Holocaust victims and survivors. Two weeks later, on Friday May 17 at 7:00 pm in our sanctuary, we will celebrate Adam Hannula's graduation from our religious school. Come offer Adam and his family blessings for what comes next and give them a hearty mazal tov on reaching this moment!

I look forward to seeing you at each of these special services or at any of our regular Saturday morning services followed by schmoozing and learning over kiddush.

Bivracha, With blessing,

Rabbi Ashira



### COMMUNITY NEWS

*Aaron Stevens* for completing the 128th Boston Marathon

### TODAH RABBAH

*Kim Callan*, for two decades of teaching in our religious school. We were incredibly lucky to have you for as long as we did!

### CONDOLENCES

*Laura Flieder*, on the death of her mother, Audrey Kopelman

### Please give generously to the Temple Emanu-El Passover "Fund a Need" 5784!

Please pledge to help fund part or all of one of the following temple needs:

- Upgrade sanctuary sound system
- Fuel expenses
- Building repairs
- Security, police details for HDD

 Donate

### Upcoming Temple Meetings

Executive Committee  
May 8 @ 7:00 pm

## UPCOMING SERVICES AND EVENTS

### SHABBAT EVENING SERVICES



MAY 3	YOM HASHO'AH SERVICE	7:00 PM
MAY 17	GRADUATION SHABBAT SERVICE	7:00 PM

### SHABBAT MORNING SERVICES

SATURDAYS AT 9:30 AM  
HYBRID | IN PERSON AND VIA ZOOM

May 4, led by Elishava Pripas  
followed by Israel Chavurah

May 11, led by Rabbi Ashira  
followed by weekly parasha study

May 18, led by Rabbi Ashira  
followed by weekly parasha study

May 25, led by Rabbi Ashira  
followed by weekly parasha study

June 1, led by Phil Platcow  
followed by Israel Chavurah

[Click to join via Zoom.](#)



### Yom HaSho'ah Holocaust Remembrance Day FRIDAY, MAY 3, 7:00 PM

*with community leaders and members of  
the Greater Haverhill Clergy Association*

special guest

*Sally Kaitz*

*sharing about her parents, Sam and Ruth Goldstein, who  
survived the Holocaust. Each found their way to the  
United States where they met and married. She will also  
discuss the ways the Holocaust affected her and her  
siblings, including imbuing them with a tremendous  
capacity for forgiveness.*

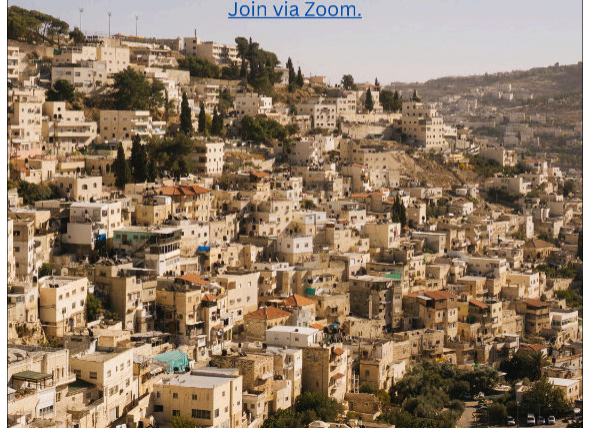
[Click here to join via Zoom](#)

### Israel Chavurah

*Saturday, May 4*

noon

[Join via Zoom.](#)



### TEMPLE EMANU-EL RELIGIOUS SCHOOL

### GOODBYE PARTY

### ALL ARE INVITED

Sunday, May 5 | noon  
Starensier Assembly

The entire Temple Emanu-El community is invited to join us as we wish a fond farewell to Kim Callan, our beloved Hebrew and Judaics teacher, after two decades of teaching at Temple Emanu-El.

Potluck – please Sign Up [HERE](#) for a potluck dish.  
Dairy only – and please remember, no nuts, per our Temple Emanu-El allergy policy.



### Class of 2024 Celebration

Friday, May 17 at 7:00 pm

Join us for a special Shabbat service  
celebrating the graduation of  
Adam Hannula

## TEMPLE COMMUNITY

### Temple Committees

Contact [Lisa Anthony](#) or any of the chairs below to join a committee.

Adult Education	Lynn Dreyfuss Martin
Anti-racism	Karen Godek
Budget	Judd Nathan
Chesed	Sharyn Russell
Dues	Kevin Miller
Fundraising	In need of chair
HaSifriyah (Library)	Paula Breger
House	In need of chair
Investment	Judd Nathan
Membership Outreach	Shelly Gladstein
Music	Rachel Hanson
PTO	Alicia and Morry Korinow
Religious Practices	Sandra Kassin-Deardorff
Religious School	Shoshana Dodge
Renovations	Kevin Miller
Security	In need of chair
Social	Scott Hannula
Social Action	Andrew Connor
Trusts/Wills/Bequests	In need of chair
Windows to the Future	In need of chair

## Happy Birthday!

Delaney Alphen  
Paula Breger  
Noah Callan  
Shoshana Dodge  
Sonny Forman  
Barry Hantman  
Ilana Hebborn  
Shirley Holber  
Eric Kobb  
Zachary Koffman  
Nadia Korinow  
Jocelyne Lampron  
Tova Lebowitz  
Doreen Robotnick  
Richard Rosengard  
Jane Rosenston  
Zachariah Shalek  
Harrison Sugarman

### Temple Leadership and Administration 2023–2024

#### Executive Committee

Jennifer Lampron	President
Scott Hannula	Secretary
Paula Breger	Assistant Secretary
Judd Nathan	Treasurer
Loren Goldstein	Past President

#### Board of Directors

Shelly Gladstein	2024
Karen Godek	2025
Rachel Hanson	2025
Sandra Kassin-Deardorff	2024
Joy Silvey	2025

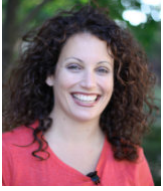
#### Temple Administration

Ashira Stevens, Rabbi  
Ira L. Korinow, Rabbi Emeritus  
Mindy Harris, Religious School Director  
Lisa A. Anthony, Executive Administrator  
Sheila Brown, Bookkeeper

[RabbiStevens@TempleEmanu-EI.org](mailto:RabbiStevens@TempleEmanu-EI.org)  
[RabbiK@TempleEmanu-EI.org](mailto:RabbiK@TempleEmanu-EI.org)  
[RSDirector@TempleEmanu-EI.org](mailto:RSDirector@TempleEmanu-EI.org)  
[Office@TempleEmanu-EI.org](mailto:Office@TempleEmanu-EI.org)  
[Bookkeeper@TempleEmanu-EI.org](mailto:Bookkeeper@TempleEmanu-EI.org)

978.373.3861 | [www.TempleEmanu-EI.org](http://www.TempleEmanu-EI.org)

## MINDY'S MUSINGS / RELIGIOUS SCHOOL



Dear Friends,

I hope this finds you after an uplifting season of freedom and renewal. Spring is definitely here and my garden is well underway. I hope you're all enjoying the warming weather and signs of summer to come. This note will likely be my last to you during my tenure at Temple Emanu-El.

As some of you know, I own a small consulting company that I work for during my time outside the temple. My goal was to step in and help the synagogue while this Religious School position was open, and when I had some extra time during the end of the Pandemic. I will now be turning my attentions back to that work, which I do during the week – and want to pass along the torch to someone who can focus on TE education more readily. I hope that you will not be strangers and will keep in touch. I'm always up for phone calls, emails and lunch outside of temple. You have all meant the world to me – and I was so honored to be part of your community again for these last few years.

I want to say Thank You from the bottom of my heart for all your kindness, help and enthusiasm in contributing to making the Temple Emanu-El Religious School the warm, loving place it is. We've had a great year, with some new families, some exciting new programming and staff, and I'm optimistic for our future.

Thank you to our teachers: Kim Callan, Rachel Hanson, Karen Godek, Amy Moldoff and Gwen Larsen, and Trudy Zakin (as an extension of our team) for all you've done this year. You have been a rockstar group of educators, and I have loved collaborating with you every minute. You have made our kids' Jewish lives rich and wonderful.

Thank you to Lynn Martin, who has helped me in the office with our administrative work; Thank you to Shoshana Dodge, our RS chair, for all your support and amazing work with J-Play!

Thank you to Rabbi Ashira for your spiritual inspiration and support of our school in myriad ways. Thank you to Jenn Lampron for your leadership and hard work on budgets, programs and the administrative aspects of running a school.

Thank you to Lisa Anthony, our TE Administrator whose work often is behind the scenes and is so integral to keeping the institution flowing and working seamlessly. She always has a kind word and has been wonderful to collaborate with. Thank you to Don Kumis, our Shamos. The word Shamos means guardian or keeper. Don has been such a loyal staff member at TE for so long, and I rely on his knowledge and expertise with the building and with all our programs. Don always takes good care of me and the school, anticipating our needs before we ask for them.

On May 5<sup>th</sup>, we will host a special End-of-Year potluck party to celebrate Kim Callan's years with us. Please join us at 12:00 PM in Starensier and sign up [HERE](#) for a potluck dish.

Also, please remember to join us for Graduation Shabbat on Friday, May 17<sup>th</sup> at 7:00 PM as we say goodbye to our graduating senior and enjoy one last Shabbat together as a school for this school year.

When I arrived back at Temple Emanu-El, my goal was to help the school get back on its feet after the pandemic and try to help bring some new energy and enthusiasm to our kids, while also assisting the synagogue in future planning and transition to a new educational leader who will pick up the baton and be the next generation of educational leadership for us going forward. I know we will have some great new faces around the temple next year – please welcome them with open arms and help them be successful educators and community members, as you have done with me – and with all our staff.

Thank you for the privilege of leading your community again.

Have a wonderful summer –

Mindy Harris

(departing) Religious School Director



## DONATIONS

### CLERGY DISCRETIONARY FUND

*Loren and Michelle Goldstein, thank you Rabbi Ashira for leading a wonderful Aufruf service*

### RABBI ABRAHAM AND SONIA JACOBSON FAMILY FUND

*Marshall Myers, in loving memory of his mother, Ethel Myers, on her yahrzeit*

### JEWISH CONTINUITY FUND

*Joseph Epstein, in honor of the Chesed Committee*

*Jennifer, Derik, Jocelyne and Jacqueline Lampron, in honor of Cory Goldstein and Amy Aisenberg's wedding*

*Janet Cowan, in loving memory of Larry Cowan*

*Michael Siegal, in loving memory of his grandmother Annie Siegal, on her yahrzeit*

*Loren and Michelle Goldstein, in loving memory of Saul Nathan and Betty Tobias*

*Sharyn Russell, Mazel Tov to Loren and Michelle Goldstein on the marriage of Cory to Amy Aisenberg*

*Amy and Michael Sherr, in honor of Loren and Michelle Goldstein on the marriage of their son Cory and Amy Aisenberg*

*Judy Kroner, in loving memory of her father and mother, Hyman and Lee Greenbaum, on their yahrzeits*

### DAVIDA & SHELDON MERKER FAMILY FUND

*Ben Merker, in loving memory of his mother, Davida Merker and his grandfather Benjamin Vinecour, on their yahrzeits*

*David Merker, in loving memory of his mother, Davida Merker, on her yahrzeit*

### PASSOVER FUND A NEED 5784

*David and Mattie Paul*

*Nancy Paul*

*Neil Gordon*

*Jennifer, Derik, Jocelyne and Jacqueline Lampron*

*Trudy and Mitch Zakin*

*Jonathan and Graciela Goldfield*

*Lisa Bouchard*

*Glenn Dansker*

*Kimberly Callan*

*Karen Godek*

*Steven and Doreen Robotnick*

*Daniel and Vera Goldberg*

*Shelly and Marty Gladstein*

### Yahrzeit Fund

*Steven Cohen, in loving memory of his aunt Sally G. Douglas, on her yahrzeit*

*Marc Klein, in loving memory of his mother, Miriam Klein, on her yahrzeit*

*Harriet Dechowitz, in loving memory of her father, Edwin Coltin, on his yahrzeit*

*Donald Tye, in loving memory of his grandmother Minnie Tye, on her yahrzeit*

*Bette Freedson, in loving memory of her father, Irving Jonas, on his yahrzeit*

*Thelma Grant Caparell, in loving memory of her father, Nathan Berman and her grandfather Max Jacobs, on their yahrzeits*

*Susan Kane, in loving memory of her father, Russell Curtis Goldbaum, on his yahrzeit*

*Susan Hantman, in loving memory of her father, Phillip Chapman, on his yahrzeit*

*Dorothy Baker, in loving memory of her husband, David Baker, on his yahrzeit*

*Stephen and Sandi Lundquist, in loving memory of her father, David Baker, on his yahrzeit*

*Diane Forman, in loving memory her father, Hyman Cohen, on his yahrzeit*

*Sonny Forman, in loving memory of his father, Harry Forman, on his yahrzeit*

*Jerold Zelinsky, in loving memory of his mother, Edith Zelinsky, on her yahrzeit*

*Alvin Fogel, in loving memory of his mother, Bessie F. Fogel, on her yahrzeit*

*Karen Eandler, in loving memory of her father, Nathan Berman, on his yahrzeit*

*Irving Freedman, in loving memory of his father, Herman Freedman, on his yahrzeit*

*Ron Weiss, in loving memory of his grandmother Rose Douglas, on her yahrzeit*

*Gwen Larsen, in loving memory of her mother, Joanne Hurwitz, on her yahrzeit*

*Margie Berkovich, in loving memory of her grandfather Morris Berkovich and her uncle Norman Berkovich, on their yahrzeits*

### TRUDY ZAKIN FAMILY CONTINUITY FUND

*Trudy and Mitch Zakin, in honor of Cory and Amy Aisenberg's Aufruf and in loving memory of Betty Tobias*

To donate online,  
please click here.



Thank you  
for your support!



## REMEMBERING THOSE AT YAHRZEIT

### May 3 & 4 26<sup>th</sup> of Nisan

Barry Berlin  
Sally Douglas  
Frank J. Forman  
Herman Freedman  
Sol Gallas  
Hyman Greenbaum  
Miriam Hertz  
Sadie Jaffe  
Mildred Kimball  
Edward Kleven  
Myn Mandell  
Bette Mandell  
Willy Ndjibu  
Hertha Rath  
Marty Rothman  
Saul Silberman  
Dorothy Sinsheimer  
Minnie Tye  
Edith Zelinsky

### May 11 3<sup>rd</sup> of Iyyar

David Baker  
Alexander Bell  
Benjamin Bender  
Morris Berkovich  
Marvin Brindis  
William Brindis  
Martha Cohen  
Hyman Cohen  
Edwin Coltin  
Harry Forman  
Etta Goldberg  
Elaine Hartman  
Benjamin Hartman  
Max Jacobs  
Irving Jonas  
Davida Merker  
Mitch Rosenbaum  
Louis Servetnick  
Sophie Shade  
Annie Siegal

### May 17 & 18 10<sup>th</sup> of Iyyar

Joel Berg  
Nathan Berman  
Phillip Chapman  
Bessie Fogel  
Ella Garber  
Russell Goldbaum  
Alan E. Holber  
Albert S. Levine  
Hyman Levy  
Ida Myers  
Karen A. Phillips

### May 25 17<sup>th</sup> of Iyyar

Pauline Baer  
Sumner Berenson  
Rose Douglas  
Richard Gorevitz  
Jennie Greenstein  
Marshall Hershman  
Gladys Levy  
Jayme Lipkin-Moore  
Meyer Newman  
Fannie Porton  
Beatrice Rosengard  
Sara Shapiro  
Moses Shyavitz



Lotsa Helping Hands  
create community

**To receive help in your time of need,**  
call one of the following LHH coordinators:

Rabbi Stevens	978.373.3861
Sharyn Russell	978.372.5777
Lisa Anthony	978.373.3861

### Trusts, Wills, and Bequests

If you are interested in discussing  
gift and naming opportunities, please contact  
Rabbi Stevens ([RabbiStevens@TempleEmanu-El.org](mailto:RabbiStevens@TempleEmanu-El.org))

or

Lisa ([office@TempleEmanu-El.org](mailto:office@TempleEmanu-El.org)).

Thank you!

## ★ TEMPLE EMANU-EL ★

### Honor Your Father and Your Mother

It is a widely observed Jewish tradition to commemorate the passing of a loved one by memorializing those that have departed with a yahrzeit plaque on a dedicated memorial wall.

At Temple Emanu-El, these plaques are lit on the yahrzeit, or anniversary of death, and for Yizkor services.

Plaques are inscribed with the name of the deceased in both English and Hebrew as well as the date of the person's death. They are available to view whenever the sanctuary is open.

The one-time cost of the plaque is \$300. To purchase a plaque in honor of a departed loved one, [order online](#) or contact Lisa or Rabbi Stevens at 978.373.3861.



**JAHM**



**JEWISH AMERICAN  
HERITAGE MONTH**

**MAY 2024**

“

**Fight for the things that you care about. But do it in a way that will lead others to join you.**

**Ruth Bader Ginsburg (1933-2020), the second woman—and first Jewish woman—to serve on the U.S. Supreme Court.**



**[JEWISH AMERICAN HERITAGE.ORG](https://www.jewishamericanheritage.org)**



## SOCIAL ACTION / COMMUNITY

*We are a welcoming, diverse, Reform, sacred community committed to embracing and implementing the principles of tikkun olam.*

*Through prayer, study, and social interactions, we honor and share our Judaic values across all generations.*



### **Sacred Hearts Food Pantry** 13 Carleton Avenue, Bradford

Drop off  
Monday–Friday (8:00–11:00 am)

Pick up for Haverhill residents in need Monday, Wednesday, and Friday (8:00–11:00 am)

Sacred Hearts Parish Food Pantry serves 1,000–1,200 families each week. Many families in our area are now out of work and facing financial crisis. The Sacred Hearts Food Pantry gives a helping hand to those in need.



Please consider donating nonperishable food items.

### **Cook for Mitch's Place It's a Mitzvah!**

For many years, Temple Emanu-El members have prepared meals for Mitch's Place, an overnight shelter for men which is part of the Emmaus network in downtown Haverhill.

If you are interested in participating in this mitzvah, please email the office at [office@templeemanu-el.org](mailto:office@templeemanu-el.org)

**Please do not drop meals off at Mitch's Place without first contacting Lisa.**

**Emmaus**



*With care and compassion, Ruth's House, Inc. provides clothing and employment training opportunities to individuals and families in need throughout the Greater Merrimack Valley.*

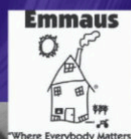
To donate goods, money, or time, visit [www.ruthshouse.org](http://www.ruthshouse.org)

Ruth's House  
111 Lafayette Square  
Haverhill, Massachusetts

### **SUPPORT EMMAUS**

Emmaus provides emergency shelter and develops affordable housing in the Lower Merrimack Valley to help families and individuals facing homelessness rebuild their lives.

**Visit Emmaus' website**  
to learn more and get involved.





# Avoid Email Scams (Phishing)

Communications from Temple Emanu-El will always come from an [@templeemanu-el.org](mailto:office@templeemanu-el.org) email address. Most—bulletins, Shavuons, bereavement notices, religious school messages—will come through Constant Contact, though some may come directly from individuals at the temple such as Rabbi Ashira or Lisa.

## Examine all emails carefully:



- Check for odd sender email addresses.
- Are there spelling and grammar errors?
- Are they asking you to take an unusual action?
- Are there unexpected links or attachments?

## If you are unsure about an email:



- Don't click on any links.
- Don't open attachments.
- Don't reply to the sender.
- Contact Lisa (978.373.3861 or [office@TempleEmanu-El.org](mailto:office@TempleEmanu-El.org)).
- Block the sender, or mark the email as junk.
- Delete the email from your computer.

Never send passwords or personal information via email!

# May

<b>May 3</b>	<b>Yom HaSho'ah Service</b>	<b>7:00 pm</b>
<b>May 4</b>	<b>Shabbat Morning Service</b>	<b>9:30 am</b>
	<b>Israel Chavurah</b>	<b>noon</b>
<b>May 5</b>	<b>Last Day of Religious School</b>	<b>9:00 am</b>
	<b>End of School Year Potluck</b>	<b>noon</b>
<b>May 8</b>	<b>Executive Committee Meeting</b>	<b>7:00 pm</b>
<b>May 11</b>	<b>Shabbat Morning Service</b>	<b>9:30 am</b>
	<b>Weekly Parasha Study</b>	<b>1:00 pm</b>
<b>May 17</b>	<b>Graduation Shabbat Service</b>	<b>7:00 pm</b>
<b>May 18</b>	<b>Shabbat Morning Service</b>	<b>9:30 am</b>
	<b>Weekly Parasha Study</b>	<b>1:00 pm</b>
<b>May 19</b>	<b>J-Play!</b>	<b>9:30 am</b>
<b>May 25</b>	<b>Shabbat Morning Service</b>	<b>9:30 am</b>
	<b>Weekly Parasha Study</b>	<b>1:00 pm</b>





Temple Emanu-El

514 Main Street  
Haverhill, MA 01830  
978.373.3861

 [Temple-Emanu-El-in-Haverhill-MA](https://www.facebook.com/TempleEmanu-El-in-Haverhill-MA)

 [twitter.com/TempleEmanuLHav](https://twitter.com/TempleEmanuLHav)

 [templemanuelhaverhill](https://www.instagram.com/templemanuelhaverhill)

 [youtube.com/@Templemanu-elhaverhill](https://www.youtube.com/@Templemanu-elhaverhill)

PLEASE PATRONIZE OUR ADVERTISERS



Specializing in  
Business & Personal Insurance

Phone: 978.372.1451

359 Main Street  
Haverhill, MA 01830

stef@cowaninsurance.com  
Fax: 978.521.4669

**Your ad could be here!**

Contact

[office@TempleEmanu-El.org](mailto:office@TempleEmanu-El.org)

for details.

**LAW OFFICE OF**  
**GERALD L. SHYAVITZ**

General Practice • Estate Planning  
Free Consultations

**Gerald L. Shyavitz, Esq.**

[www.estateplanninghaverhill.com](http://www.estateplanninghaverhill.com)

Bus: 978.241.2682 G.Shyavitz@comcast.net  
Cell: 603.401.5655 11 Kenoza Ave., Haverhill, MA 01830



TOLL FREE: 866.99.DEPOT  
LOCAL: 603.222.9066

Got a "Trashy" Question?  
For an answer or **FREE** price quote!  
Visit us at [www.DumpsterDepot.com](http://www.DumpsterDepot.com)

**H.L. Farmer & Sons Funeral Homes**



**978•372•9311**

106 Summer Street  
Haverhill

210 South Main Street  
Bradford